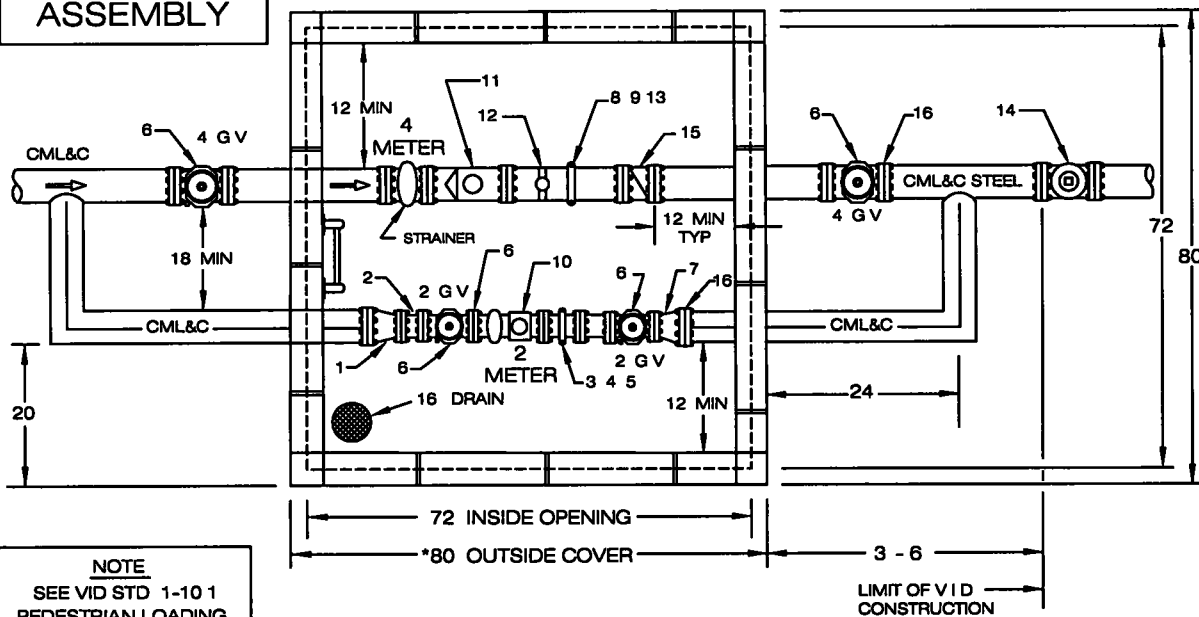


2" X 4" METER ASSEMBLY

8" BLOCK CONSTRUCTION SHOWN

NOTE SPECIAL CONST REQUIRED WHEN 2 METER USED

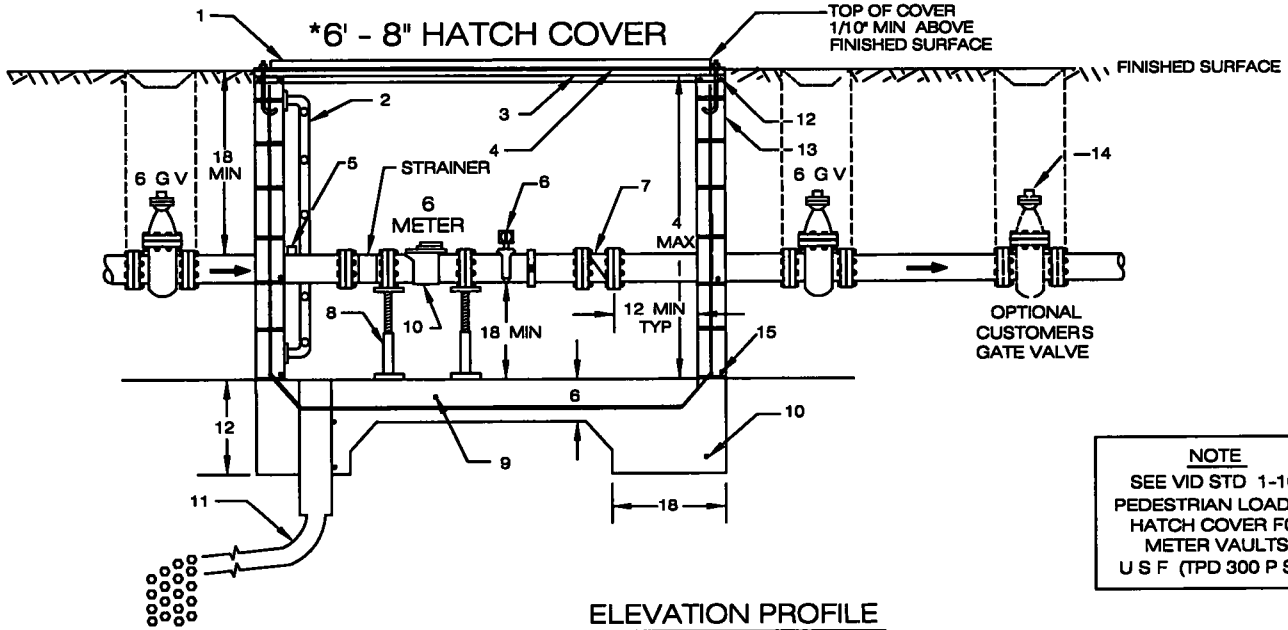
PLAN VIEW



- 1 6"x 2 1/2" FORGED STEEL REDUCER (EPOXY LINED INSIDE)
- 2 1 1/2" x 2" NYLON BUSHING
- 3 VICTAULIC NIPPLE 5 x 2 MALE THREAD x GROOVE
- 4 VICTAULIC NIPPLE 5 x 2 GROOVE x FLG 2"
- 5 VICTAULIC COUPLING 2" FLG x FLG GATE VALVE
- 6 6" x 2" C I REDUCER
- 8 6" x 4" VICTAULIC NIPPLE GROOVE x PLAIN END
- 9 6" VICTAULIC COUPLING
- 10 ROCKWELL TURBINE METER/STRAINER
- 11 ROCKWELL W 1000 DR TURBO METER & STRAINER W/REMOTE READING DIAL
- 12 2" SERVICE SADDLE REF 1-8
- 13 VICTAULIC COUPLER
- 14 OPTIONAL CUSTOMERS GATE VALVE
- 15 CLA VAL NO 501 WAFER SWING CHECK VALVE
- 16 INSULATING FLANGE

NOTE
SEE VID STD 1-10 1 PEDESTRIAN LOADING HATCH COVER FOR METER VAULTS U S F (TPD 300 P S F)

*PRECAST VAULTS REQUIRE SUBMITTAL OF SHOP DRAWINGS



NOTE
SEE VID STD 1-10 1 PEDESTRIAN LOADING HATCH COVER FOR METER VAULTS U S F (TPD 300 P S F)

6" METER ASSEMBLY

- 1 U S F (TPD 300 P S F) OR EQUIVALENT
- 2 18" WIDE STEEL LADDER WITH RUNGS ON
- 3 5 x 3 x 3/8 ANGLES IF NEEDED
- 4 PRE-CAST VAULT REQUIRES SHOP DWG SUBMITTALS
- 5 2" COUPLING W/CORP STOP
- 6 2" SERVICE SADDLE REF 1-8
- 7 CLA-VAL NO 501 WAFER SWING CHECK VALVE
- 8 VALVE SUPPORTS (SCREW JACKS)
- 9 NO 4 BARS AT 12" O C - BOTH WAYS
- 10 4-NO 4 BARS CONTINUOUS AT FOOTINGS
- 11 REFER TO DWG 6-6 FOR DRAINAGE AND SUMP SPEC
- 12 2 NO 4 BARS AT BOND
- 13 8 x 8 x 16 CONC BLOCK GROUT SOLID
- 14 OPTIONAL CUSTOMERS GATE VALVE
- 15 NO 4 BARS HORIZ AT 24" O C

LAST DRAWING APPROVAL DATE	
12 / 02 / 99	

VISTA IRRIGATION DISTRICT

(2" X 4") AND 6" ASSEMBLIES
TURBINE METER & VAULT

PATH Z ENGINEERING\TOM\STDDWGS\1-10A DWG1 DWG
REVISED JULY 17 2003
JOHN AMODEO DATE R C E 31161 <i>John Amodeo 9/26/03</i>
STANDARD DRAWING 1-10